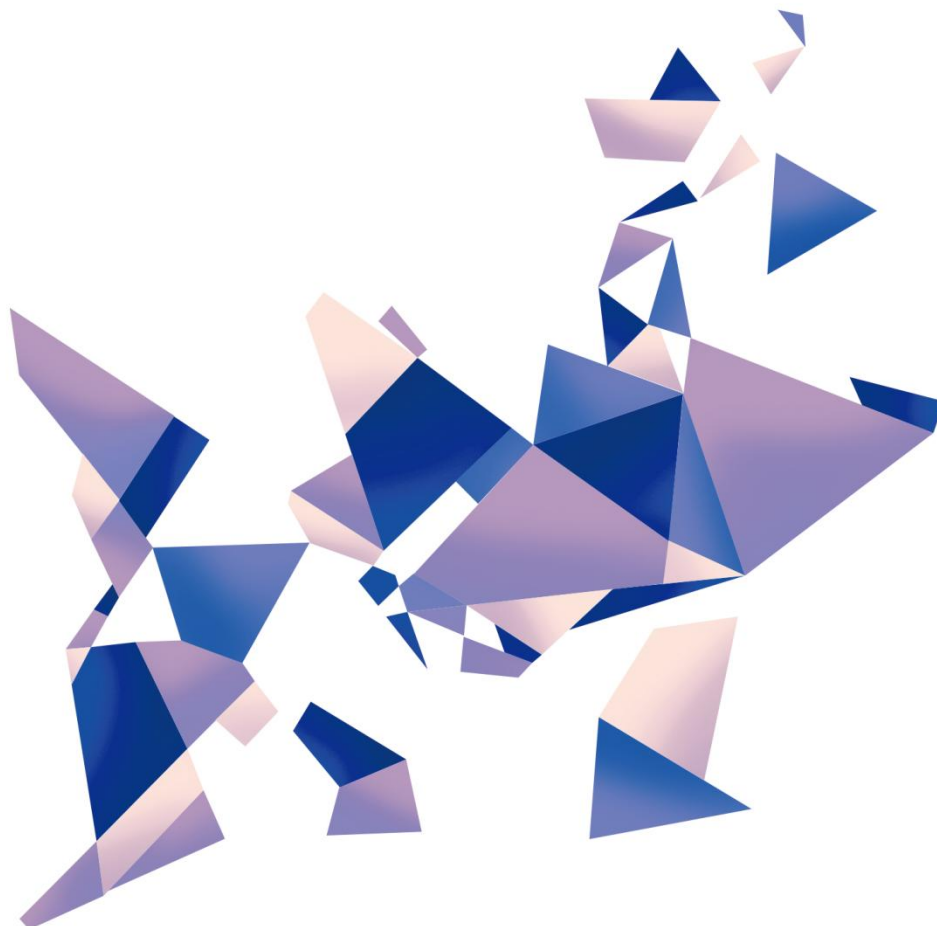


LA400

Intelligent server

Version: v1.0

Release Date: November 2022



Specifications



TEL 400 159 0808
Web: www.kystar.com.cn

Beijing KYSTAR Technology Co., Ltd.

Professional Ultra HD Video Display
Control system integrated solution and service provider

Version record

version number	Change details	release time
V1.0	first release	2022.07.25
V1.1	Modify some parameters and redesign the chassis	2022.11.18

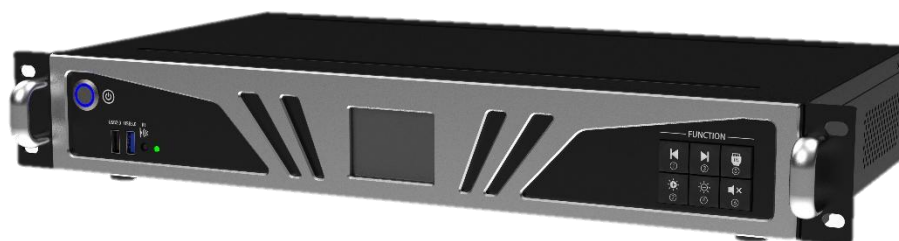
LA400 Intelligent server Product Specification

Overview

KYSTAR LA400 Intelligent server integrates sending card, video processor, Kommander software, Kares and other functions.

The system supports a variety of types of external video input interfaces, which can mix and edit external signals with internal materials. Supports four Gigabit network ports and one HDMI output, can be connected to an external monitor, connected to USB keyboard and mouse and other peripherals. It can be used as a microcomputer server for editing and playback, can also use PE, APP, Kares and other control terminals to send programs.

Support dual screen display, editing and playback do not interfere each other. Support remote control, simple and fast.



Features

- Gigabit Ethernet port*4, no external sending card required, support all of KYSTAR Gold Card;
- Equipped with Kommander OS system, with professional multimedia processing capacity, you can easily complete HD video, audio, pictures and other multimedia files play and visual arrangement;
- DVI*1, HDMI*3 multiple external signals;
- mix and edit external signals with internal materials;
- Support visual wireless control of mobile phone and tablet APP, and support WIFI STA and WIFI AP dual mode working at the same time, as a WIFI hotspot simultaneous access to other wireless networks;
- Supports network port and wifi communication for connection control with peripherals in different ways;
- Support quick import of materials through USB;
- Onboard brightness sensor interface, automatically adjust the screen brightness according to the ambient brightness;
- Support through wired network, WIFI, 4G and other ways accessed Kares to realize remote

multi-network cluster control;

- Support editing and saving multiple programs, and set the playback time plan to achieve unattended playback;
- Support dual screen display, editing and playback do not interfere each other;
- Support remote control, simple and fast;
- Support PPT with special effects playback;
- Support wireless screen projection function;

Panel description

Front

panel



No.	instruction
1	USB2.0*1, USB3.0*1
2	Infrared remote control receiving end
3	Indicator light, normal operation green light is solid, standby red light is always on
4	Switch button
5	Full-color LCD Information screen
6	Program switching, brightness + -, input signal switching, mute

Back panel



Input		
Type	Number	Specifications
DVI-D (24+1)	1	The maximum supported resolution is 1920×1080@60Hz, backward compatible Compatible with HDMI 1.3 and below, EDID version 1.3
HDMI(TYPE A)	3	The maximum supported resolution is 1920×1080@60Hz, backward compatible Compatible with HDMI 1.3 and below, EDID version 1.3

Output		
Type	Number	Specifications
LAN	4	Gigabit Ethernet port*4, no external sending card required, support all of KYSTAR Gold Card;
HDMI(TYPE A)	1	The resolution is 1920 × 1080@60Hz, and an external display can be used as an operation control interface
1/8" TRS	1	3.5mm Audio output port, 2.0Vp-p / 10 KΩ

External interface type		
Type	Number	Specifications
USB	1	USB2.0*1, USB3.0*1 , can be connected to an external monitor, connected to USB keyboard and mouse and other peripherals
NET	1	Connect to a debugging computer for debugging or publishing programs; LAN/Internet network connection Port
J1-J3	3	The power interface of the relay can control the external power switch DC: maximum voltage 30V, maximum current 3A AC: maximum voltage 250V, maximum current 3A Note: It is recommended to use DC power, and it is not recommended that relays directly control AC power. If you need to control AC power, it is recommended to use the wiring method shown in the figure below

WIFI	2	Dual-band WIFI antenna interface, support 2.4G and 5G signals
IR	1	RS485 interface for external infrared extension module (module is an optional device)
RS232	1	External GPS module (module is an optional device)
RS485	1	External brightness sensor/ temperature and humidity sensor module (module is an optional device)
4G	1	4G antenna interface
SIM	1	SIM card slot, full Netcom, supports three major operators

Parameter specifications

Performance parameters	
Hardware performance	1.8GHz, quad core CPU 1GB@600MHz DDR3 high speed memory Support H.264, H.265 4K@60fps Hard decoding playback
Storage	Built in 32GB storage (25g for users), support TF card for extended memory
Load	Single Lan port load 650,000 pixels, whole machine load 2.35 million pixels, the widest is 3840, the highest is 2000
Wifi connect distance	20m (Unobstructed)

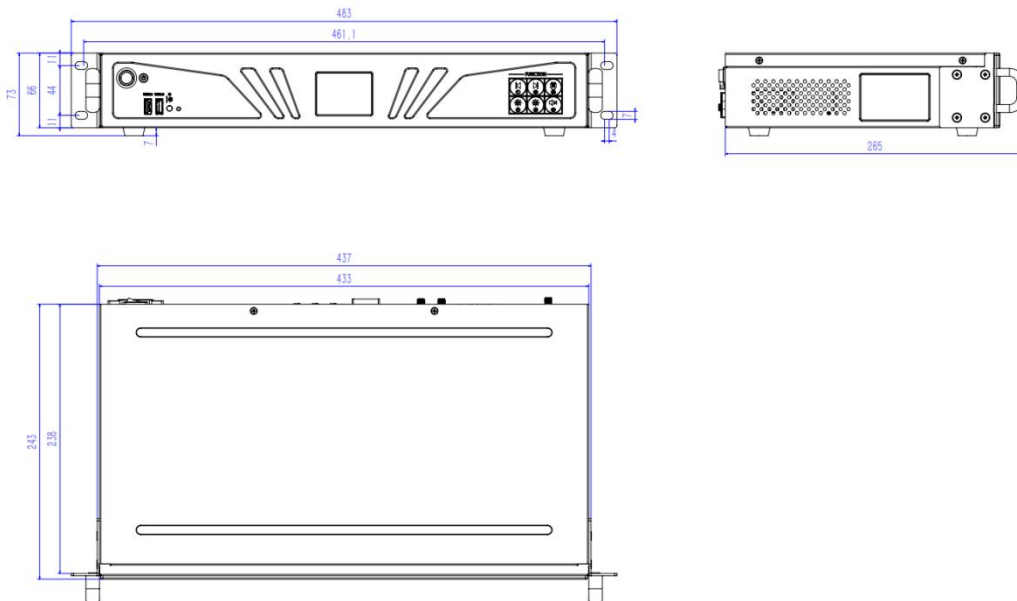
Supports multimedia formats	
Video format	AVI, WMV, MPG, RM/RMVB, VOB, MP4, FLV and other common video formats;
Audio format	Supports same time playback of multiple videos

Image Format	MPEG-1 Layer III, AAC etc.
Text form	Support bmp、jpg、png etc.
Clock	Single line text, static text, multi-line scrolling text, office, etc.
OSD	Real-time clock, multi-regional clock display and management.

External interface type	
External interface type	External interface type
External interface type	External interface type
Input power	100-240VAC 50/60Hz 0.6A
Rated power	30W
Operating temperature	-20°C -60°C
Operating humidity (%)	5%-95%

Annex:

Device size drawing



Description of the remote control

